

*Tripp***NT**

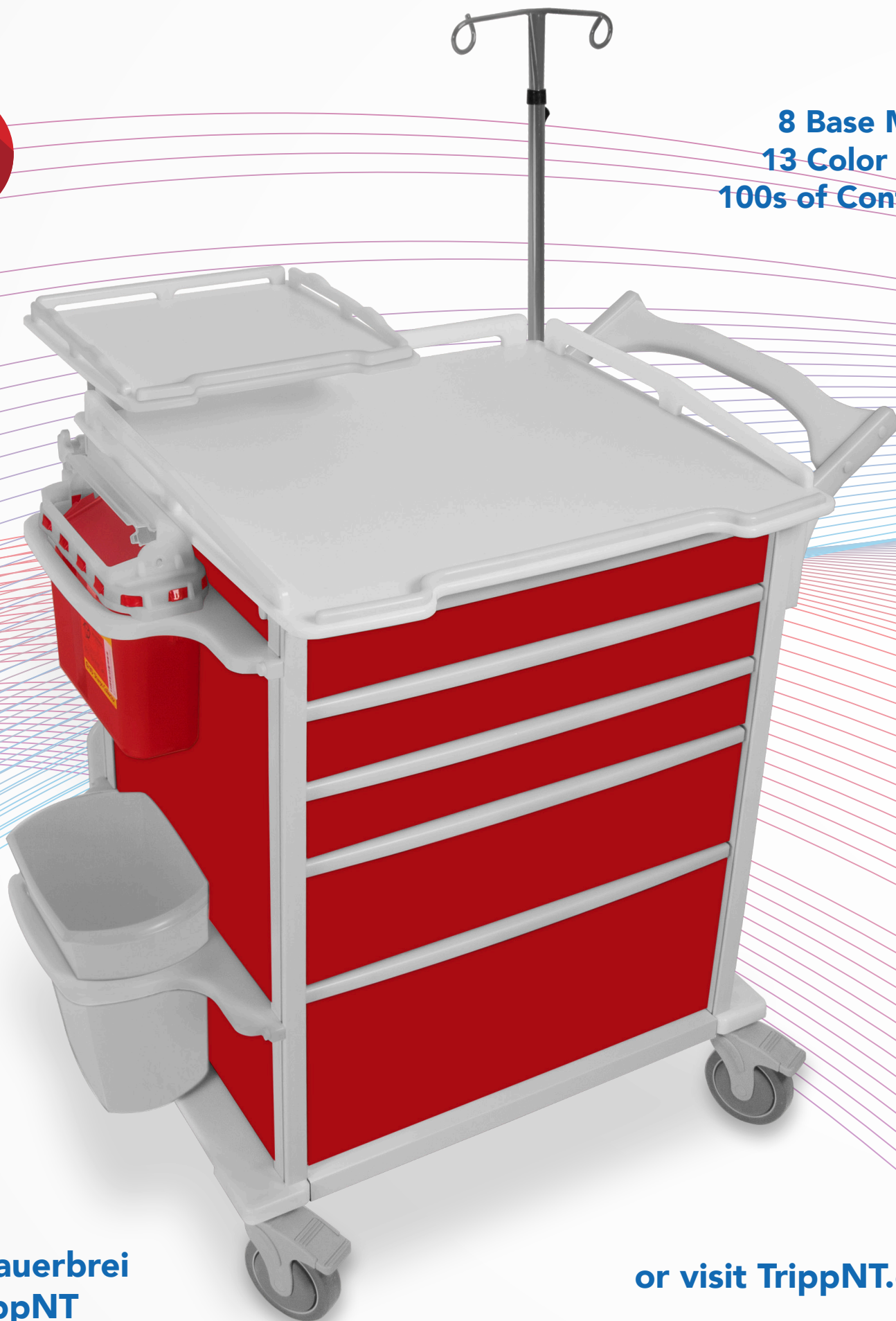
CONFIDENTLY BE IN YOUR  
**ELEMENT**

Patent Pending

Advanced Lab & Medical Carts



8 Base Models  
13 Color Choices  
100s of Configurations



Call Shane Sauerbrei  
1-800-TrippNT  
(1-800-874-7768)

or visit [TrippNT.com/Element](https://www.TrippNT.com/Element)

**The Highest Quality Feature Rich Carts  
at a Superior Value**



# Configure Your ELEMENT Cart to Fit Your Application

Patent Pending



## ELEMENT 07

Patent Pending

- Compact Cart fits under tables, drawers, counters and benches
- Four 12 x 3 x 15½ inch drawers (width x height x depth)
- 3 inch casters standard

Part # 51610

17" x 27" x 20"  
width height depth

\*Shown Optional Railed Top [52968]



## ELEMENT 03

Patent Pending

- Space Saving Cart maximizes your work area with slim profile
- Three 12 x 3 x 15½ inch drawers (width x height x depth)
- Large bulk storage area
- 4 inch casters standard

Part # 51498

21" x 34½" x 18½"  
width height depth



## ELEMENT 01

Patent Pending

- All Purpose Cart with the most storage options for the dollar
- Six side shelves (2 dispensers, 4 open) (width x height x depth)
- Three 12 x 3 x 15½ inch drawers (width x height x depth)
- Rear mount tool & document holder
- 4 inch casters standard

Part # 51463

24" x 35" x 19"  
width height depth

\*Shown with Optional Command Handle [51535]



## ELEMENT 06

Patent Pending

- Tall Space Saving Cart
- Three 12 x 5 x 15½ inch drawers (width x height x depth)
- Large bulk storage area
- 4 inch casters standard

Part # 51609

26½" x 43" x 20"  
width height depth

\*Shown with Optional Railed Top [52969] and 5-inch casters



## ELEMENT 05

Patent Pending

- Tall All Purpose Cart
- Six side shelves (2 dispensers, 4 open)
- Rear mount tool & document holder
- Large bulk storage area
- Three 12 x 5 x 15½ inch drawers (width x height x depth)
- 4 inch casters standard

Part # 51504

26½" x 43" x 20"  
width height depth

\*Shown with Optional Rail Top [51665] and Command Handle [51535]



## ELEMENT 04

Patent Pending

- Extra Tall Cart has optimal amount of drawer storage
- Built-in tray top
- Four 12 x 3 x 15½ inch drawers (width x height x depth)
- Two 12 x 8 x 15½ inch drawers
- 4 inch casters standard

Part # 51502

24" x 47" x 18"  
width height depth



Pull Out Shelf

## ELEMENT 02

Patent Pending

- Extra Wide Drawer Cart
- Three 23 x 3 x 15½ inch drawers
- Two 23 x 6 x 15½ inch drawers
- One 23 x 7½ x 5½ inch drawers (width x height x depth)
- 4 inch casters standard

Part # 51464

32" x 42" x 23½"  
width height depth

\*Shown with Optional Command Handle [51535] and Pull Out Shelf [51538]



## ELEMENT 09

Patent Pending

- Extra Large Cart with Deep Drawers
- Rail Top Included
- Three 23 x 3 x 22 inch drawers
- One 23 x 6 x 22 inch drawers
- One 23 x 10 x 22 inch drawers (width x height x depth)
- 5 inch casters standard

Part # 51622

31" x 42" x 24"  
width height depth

Legendary Customer Service | Limitless Customization | 100% Total Replacement Lifetime Guarantee | Life Altering Value | Super Quick Lead Times

## ELEMENT Carts are FEATURE RICH



Full-Extension Soft-Close Drawers



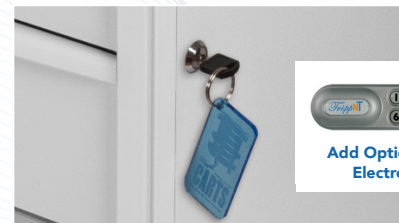
3, 4 or 5 inch Enclosed High Compressive Strength Nylon Rubber Casters



Superior Maneuverability with Optional Command Handle™



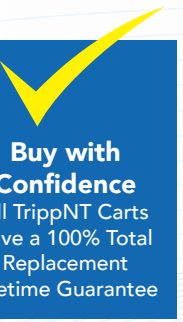
Adjustable & Customizable Built-in Track System



Built-in Key lock to secure all drawers and compartments

## Select from 13 Unique Colors

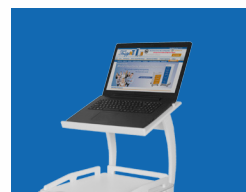
<input type="checkbox"/> White	<input type="checkbox"/> Bahamas Sea Teal	<input type="checkbox"/> Hosta Leaf Green
<input type="checkbox"/> Almond Beige	<input type="checkbox"/> Gum Drop Purple	<input type="checkbox"/> Bright Idea Yellow
<input type="checkbox"/> Silver Metallic	<input type="checkbox"/> Global Blue	<input type="checkbox"/> Cherry Red
<input type="checkbox"/> Black	<input type="checkbox"/> Pumpkin Orange	<input type="checkbox"/> Catalina Mist Green
<input type="checkbox"/> Watermelon Pink		



Buy with Confidence  
All TrippNT Carts have a 100% Total Replacement Lifetime Guarantee

4100-3

## Enhance Your ELEMENT with Modules & Accessories for Limitless Customization



### Laptop Shelf

- Adjustable angled shelf holds up to a 17" laptop securely at a comfortable position

Compatible with:  
01 03 04 05 06 07

Part # 52954



### Oxygen Tank & Glove Holder Module

- Provides secure transport of D or E Oxygen tank and 2 boxes of gloves
- Access glove storage with soft-close drawer slides.
- Additional open storage compartment

Compatible with:  
01 02 03 04 05 06

Part # 52953



### Steel Panel for Magnetic Accessories

- Magnetic panel allows addition of magnetic holders to side of cart
- Available in 5 sizes

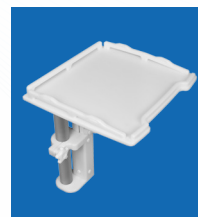
Compatible with:  
ALL ELEMENTS



### Breakaway Lock Option

- Innovative breakaway design
- Can be added to any Element
- Visually indicates need to replenishment
- Also available in gang-lock option

Compatible with:  
ALL ELEMENTS



### 360° Rotating Defibrillator Shelf

- Railed platform with 360° rotation
- Mounts securely to the corner
- Velcro security straps included

Compatible with:  
ALL ELEMENTS

Part # 52970



### Telescoping I.V. Pole

- Pole extends up to 36 inches above cart
- Double loop design for 2 bags

Compatible with:  
ALL ELEMENTS

Part # 52951



### Oxygen Tank Mount

- Provides secure transport of D or E Oxygen tanks
- Velcro straps hold tank in place

Compatible with:  
ALL ELEMENTS

Part # 51641

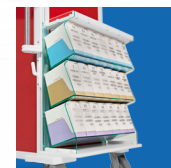


### Cardiac Board & Mount

- Rigid Cardiac Board
- Mounting hooks allow for easy retrieval
- Available in 2 sizes

Compatible with:  
ALL ELEMENTS

Part # 52952



### Suture Shelf

- Three shelves accommodate up to 21 large suture boxes
- Angled design for easy dispensing

Compatible with:  
01 02 03 04 05 06

Part # 52960



### Crash Cart Handle

- Ergonomic handle for maneuvering the large Element 09 Crash Cart
- Durable HDPE construction

Compatible with:  
09

Part # 51642



### Sharps Container Mount

- Mount for sharps waste container
- Includes one 5.4 qt sharps container

Compatible with:  
09

Part # 51644



### Waste Container

- Easy to disinfect mount for waste container
- Includes waste container

Compatible with:  
09

Part # 51643