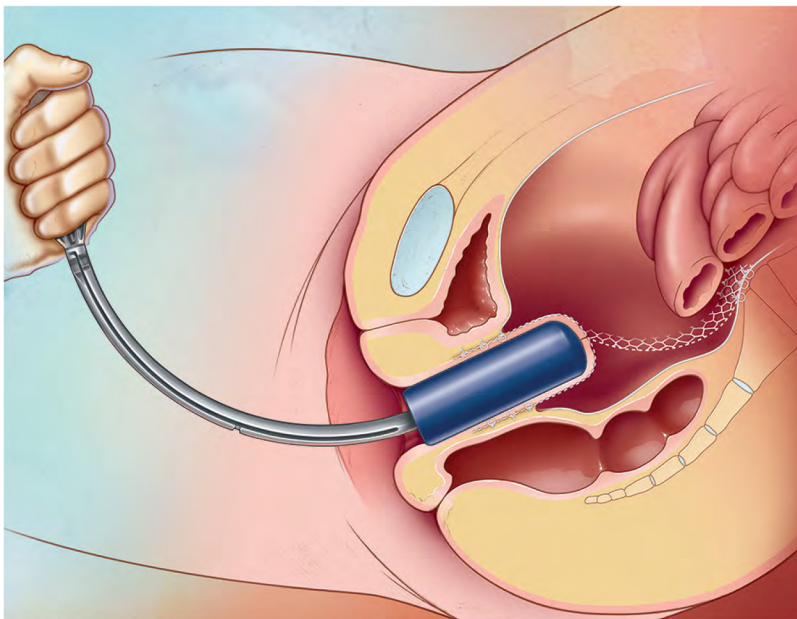


Sacrocolpopexy/ Sacrocervicopexy Tip

for Vaginal Prolapse Repair

Unique Benefits

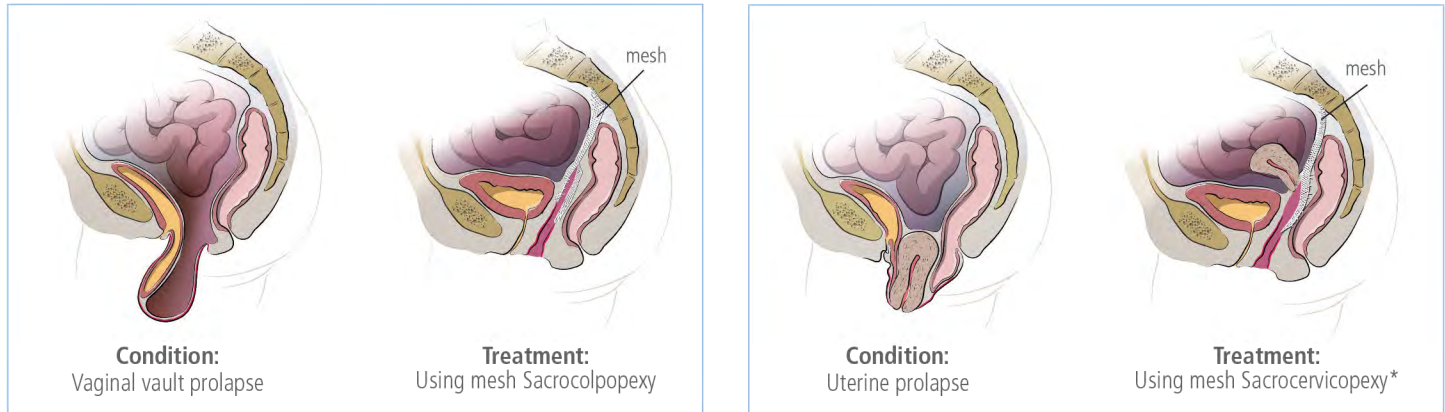
- Three different contoured tip designs provide the correct length and width for enhanced control during sacrocolpopexy and sacrocervicopexy procedures
- Connects to all RUMI® System and Advincula Arch Handles
- The Sacro Tips provide control while suturing the vagina and anterior longitudinal ligament of the sacrum
- Designed by gynecologists for gynecologists



Procedure Overview:

Place the Sacrocolpopexy Tip transvaginally, elevating the vaginal apex into the operative field. If the cervix is present, use the Sacrocervicopexy Tip. Reflect the peritoneum overlying the anterior and posterior vaginal epithelium. Dissect the bladder and rectum away from the underlying vaginal tissue to expose 4 cm of apical vagina. Prepare the Y-shaped mesh.

Anchor one segment along the anterior vaginal wall with a series of interrupted permanent sutures. Anchor the second segment along the posterior vaginal wall. Suture the shaped mesh to the anterior longitudinal ligament of the sacrum. Close the peritoneum over the graft complex and irrigate the pelvis. Remove the laparoscopic instrument parts and close the abdomen. (See the diagram below for sacrocervicopexy adaptation.)



* If the cervix is present post-Laparoscopic Supracervical Hysterectomy, use both anterior and posterior. If the entire uterus remains, use only posterior sacral mesh.

Product Description:

- The Sacrocolpopexy Tips are used for laparoscopic prolapse repair procedures in which the cervix has been removed.
- The Sacrocervicopexy Tip is used for vaginal prolapse repair procedures in which the cervix is intact.

Ordering Information:

| Product Code | Description | |
|--------------|--|---|
| SACRO-1 | Sacrocolpopexy Tip- Large 1.5 inch x 4.5 inch (3.8 cm x 11.4 cm) Single-Use, Disposable, (3 per box) |  |
| SACRO-1S | Sacrocolpopexy Tip- Small 1.3 inch x 3.5 inch (3.2 cm x 9 cm), Single-Use, Disposable, (3 per box) |  |
| SACRO-1C | Sacrocervicopexy Tip 1.5 inch x 4.5 inch (3.8 cm x 11.4 cm), Cavity 1.3 inch by 1.5 inch deep (3.3 cm by 3.8 cm), (3 per box) |  |

CooperSurgical

CooperSurgical is the leading company dedicated to providing medical devices and procedure solutions that improve health care delivery to women regardless of clinical setting. Our company is fostering that position through expansion of its core businesses and introduction of advanced technology-based products, which aid clinicians in the management and treatment of commonly seen conditions.

800.243.2974 | 203.601.5200 | coopersurgical.com | 95 Corporate Drive | Trumbull, CT 06611
Also on [YouTube.com/coopersurgical](https://www.youtube.com/coopersurgical)