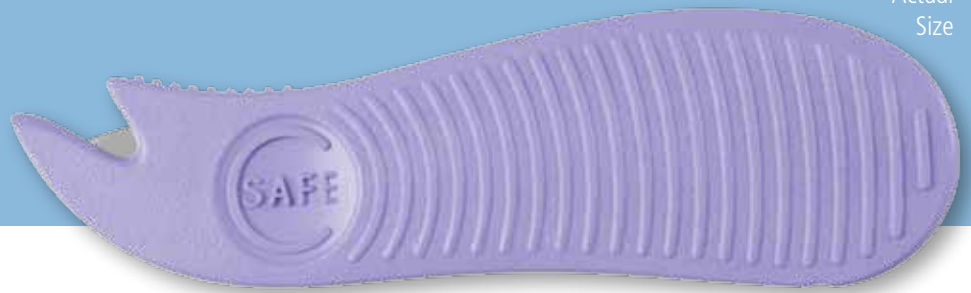


# C SAFE Procedure Guide

Let's Make Fetal Lacerations a "Never Event"

Actual Size



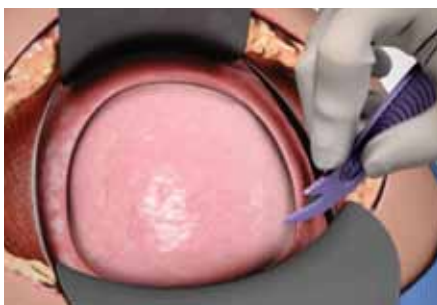
## Insert At An Oblique Angle, Then Rock Handle Horizontally



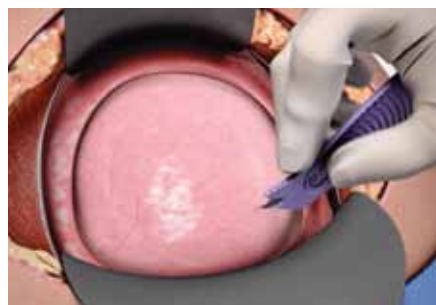
Hold C SAFE at an oblique angle for blunt entry into the uterine wall.



Immediately rock handle horizontally to cut up and away from the fetus.



**1.** Use the distal tip to enter into the uterine wall. Position the angle of the tip carefully based on the thickness of the uterine wall. Proper entry can be achieved either in a single pass or multiple passes.



**2.** Once C SAFE tip passes through uterine wall, immediately rock the device handle horizontally so the C SAFE tip points in the direction of intended incision, as well as pointing slightly upwards toward the inner uterine wall.



**3.** Once in the uterine cavity, continue the incision transversely.

**NOTE:** Entry into the uterine cavity may be achieved in either a single pass or multiple passes based on uterine wall thickness.

**ADDITIONAL SAFETY TIP:** This slightly upward angle helps reduce the risk of the device tip catching on anything below, such as amniotic membrane or the umbilical cord.



# Frequently Asked Questions



## Q: Why should I consider using C SAFE?

A: C SAFE not only helps to prevent fetal lacerations, but the potential medical, legal and emotional complications that are likely to occur as a result. C SAFE has been used in thousands of cases since its introduction to the market in 2012 and is quickly becoming recognized as a device within many institutions across the nation that has the potential to make fetal lacerations a “never event.”

## Q: How does C SAFE prevent fetal lacerations?

A: C SAFE was specially designed to prevent fetal lacerations. The distal tip ensures blunt entry into the uterus while the shielded blade cuts up and away from the fetus.

With a traditional scalpel, the blade is exposed to the fetus, causing the potential for laceration, especially during emergent cases. With C SAFE, the blade is shielded which helps ensure that the scalpel will not make contact with the fetus.

## Q: Will I be able to keep a secure grasp on the device with slippery gloves?

A: C SAFE’s handle was specially designed to accommodate surgical gloves. Thick knurling on both the sides of the device, as well as a pressure point to place your index finger, were incorporated into the design specifically for this purpose.



## Q: What size blade is C SAFE?

A: C SAFE is comprised of a #23 stainless steel surgical blade encased in an ergonomically designed, medical grade resin handle.

## Q: Is C SAFE reusable?

A: No. C SAFE should not be reused or re-sterilized under any circumstances.

## Q: Does this product contain latex?

A: No, the C SAFE Safety Scalpel is latex-free.

## Ordering Information

Product#	Contents
BX101	C SAFE Safety Scalpel – Box of 10

## CooperSurgical

CooperSurgical is the leading manufacturer of innovative medical devices and procedure oriented solutions that advance the standard of care. Our highly reliable and clinically relevant products, as well as nearly 150 clinically trained utilization sales specialists facilitate the delivery of enhanced outcomes for your patients, regardless of the clinical setting.

See us on YouTube at [www.YouTube.com/CooperSurgical](http://www.YouTube.com/CooperSurgical).

800.243.2974 | 203.601.5200 | [coopersurgical.com](http://coopersurgical.com) | 95 Corporate Dr., Trumbull, CT 06611