

Expandable LeMaitre[®] Valvulotome

Self-Sizing and Self-Centering
for More Effective Valvulotomy

Expandable LeMaitre® Valvulotome

"THE INSTRUMENT OF CHOICE"™ IN VALVULOTOMY

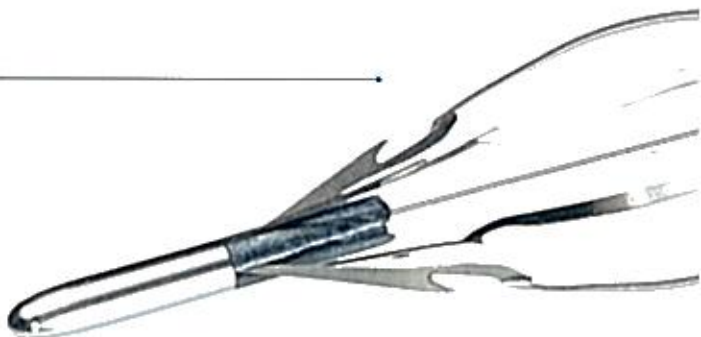
The Expandable LeMaitre Valvulotome is an innovative instrument that uses unique self-sizing, self-centering hoops for well positioned, clean valve ablation, decreased wound necrosis, and faster patient recovery. A recent study in the *Journal of Vascular Surgery* concluded that blind valvulotomy with the expandable, self-sizing valvulotome facilitates safe and effective minimally invasive in situ bypass.**

* Costello JE: In Situ Saphenous Vein Bypass Forty Years Later. *World J Surg.* 2005; 29:535-538.

** Gangadharan SP, Reed AD, et al: Initial experience with minimally invasive in situ bypass procedure with blind valvulotomy. *J Vasc Surg.* 2002; 35:1100-8.

*** Schatzler H, Shladary M: Evaluation of Efficacy and Safety of Valvulotomes in an "Ex vivo" In-situ Bypass Model. *Vasc Surg* 1998; 32:463-469.

With a **BLADE RANGE OF 1.8–6.0 mm**, the Expandable LeMaitre Valvulotome eliminates the need for multiple sizes of instruments, enabling effective valve cutting in more veins. Retract the sheath to deploy the four recessed blades to quickly cut cusps in a few smooth passes.



HEAD TO HEAD EFFICACY OF VALVE LYSIS***

89% Expandable LeMaitre Valvulotome
80% Competitor A
82% Competitor B

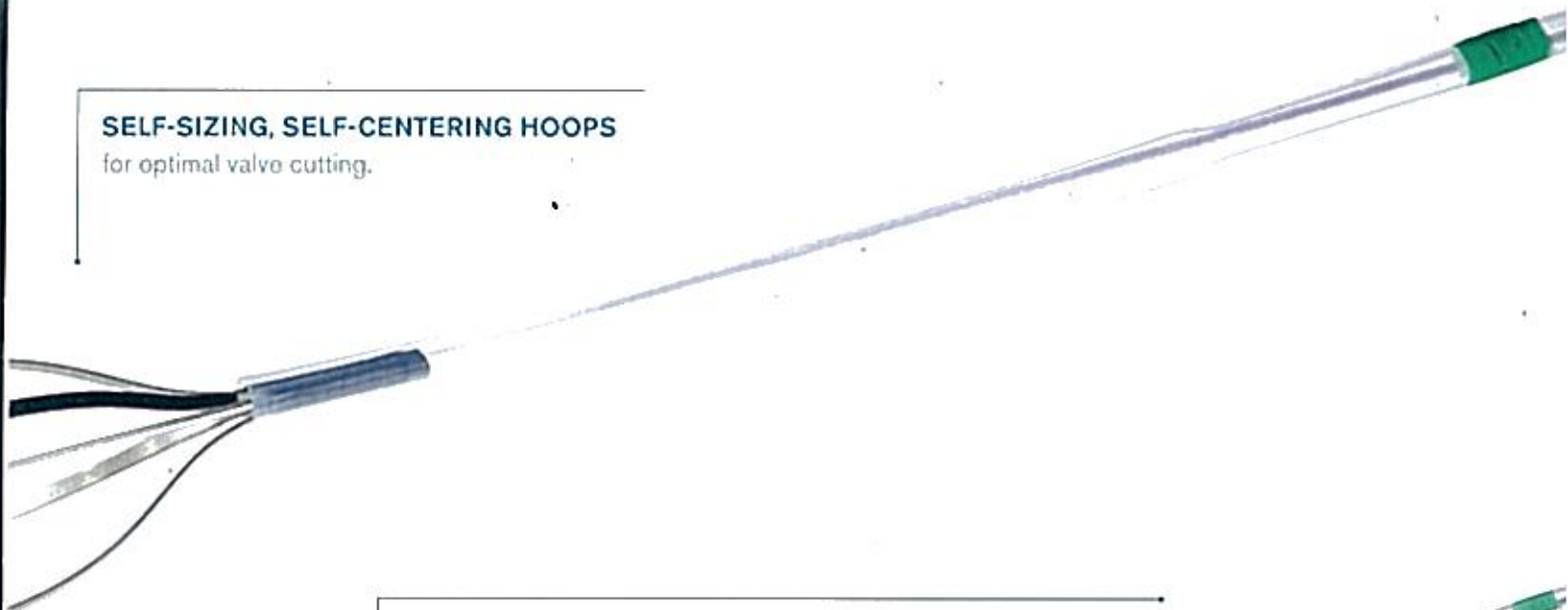
USING THE EXPANDABLE LEMAITRE VALVULOTOME



STEP 1 Advance the valvulotome in the closed position 2–3 cm distal to the proximal anastomosis. The blades must be above the first set of competent valves.

SELF-SIZING, SELF-CENTERING HOOPS

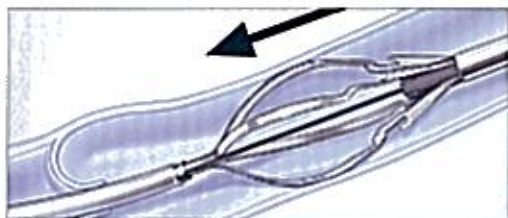
for optimal valve cutting.



ATRAUMATIC INSERTION With its unique Teflon sheath, the blades remain closed during insertion for smooth advancement to the proximal anastomosis.



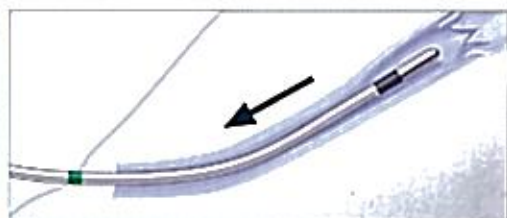
IRRIGATION PORT enables saline injections to ease device passage.



STEP 2 Open the valvulotome and slowly withdraw the instrument through the saphenous vein.



STEP 3 The self-sizing, self-centering hoops automatically adjust to vein diameter for optimal valve cutting.



STEP 4 Close blades of valvulotome when green safety stripe appears outside of patient's saphenous vein before withdrawing the instrument. The green stripe is 3.5 cm distal to end of protective sheath.

Expandable LeMaitre[®] Valvulotome



ORDERING INFORMATION

Model #

Expandable LeMaitre Valvulotome 110 cm

| | |
|--|---------|
| Expandable LeMaitre Valvulotome | 1000-90 |
| Expandable LeMaitre Valvulotome 5 Pack | 1000-95 |

Expandable LeMaitre Valvulotome 40 cm

| | |
|--|---------|
| Expandable LeMaitre Valvulotome | 1096-00 |
| Expandable LeMaitre Valvulotome 5 Pack | 1096-01 |

VALVULOTOME SPECIFICATIONS

| Maximum Hoop Diameter | Maximum Blade Diameter | Blade Housing Outer Diameter | Outer Diameter of Protective Sheath | Overall Length |
|-----------------------|------------------------|------------------------------|-------------------------------------|----------------|
| 9.0 mm | 6.0 mm | 1.8 mm | 1.3 mm | 110 and 40 cm |

These specifications are not intended as a warranty. In the interest of product improvement, these specifications may be changed from time to time without notice. Please consult your sales representative for details.

LeMaitre Vascular, Inc.
63 Second Avenue
Burlington, MA 01803
USA

T 781 221 2266
F 781 221 2223

LeMaitre Vascular GmbH
Otto-Volger-Str. 5a/b
65843 Sulzbach/Ts.
Germany

T +49 (0)6196 659230
F +49 (0)6196 527072

LeMaitre Vascular GK
1F Kubodera Twin Tower Bldg.
2-9-4 Kudan-minami, Chiyoda-ku
Tokyo 102-0074
Japan

T +81 (0)3 5215 5681
F +81 (0)3 5215 5682

For More Information:
Contact your local LeMaitre
Vascular Sales Representative.

For Customer Service:
Call 800 628 9470

